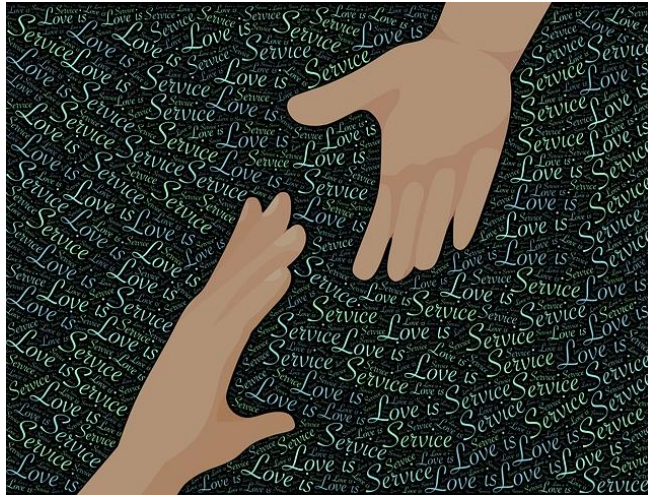


GENEROUS GIVING 2024 give+help+pray

ST THOMAS CHURCH



WE LIVE IN DIFFICULT TIMES

The cost of living crisis drives more and more people into poverty
Mental health problems increase
The NHS and public services are under massive strain
War, climate change and oppression cause millions to migrate
Unjust regimes deny human rights
The future of the planet is at risk
Misinformation undermines trust and stability

Our world needs hope.

In Jesus, God has shown us that:

LOVE IS STRONGER THAN HATRED

LIGHT IS STRONGER THAN DARKNESS

As Christians we are called to join in with what God is doing.

By being a GENEROUS GIVER you can help us be a channel of love, peace, justice and hope

GENEROUS GIVING: give+help+pray

3 things that are

good for our church & good for our soul

GIVE

St Thomas is not a wealthy church, but we want to be financially stable so we can fund the mission of God here for generations to come.

This is what we're doing:

- We work hard to increase the money we get from others using the building
- We apply for grants to support our mission
- We hold fundraising events
- We're careful with money and avoid waste

BUT if we're going to achieve all we want to achieve in the coming year, we need the congregation to be **GENEROUS** in financial giving

Our church needs to:

- Put our Mission Action Plan into practice
- Look after and run the building
- Pay our pledge to the Parish Support Fund *
- Contribute to curate's housing costs, clergy expenses and staff pay

In 2024 we want to spend £64,800 in serving God's mission here. What can you give towards that?

GENEROUS GIVING is what all Christians are called to, but not everyone in the congregation has the same income or commitments. That's why scripture teaches the principle of giving a percentage of our income. The Church of England asks members to give 5% of their after-tax income to the Church and 5% to other charities.

God loves us. We can never repay God for all he's done for us. But we can say thank you.

CAN YOU START GIVING?

CAN YOU INCREASE WHAT YOU ALREADY GIVE?

*The Parish Support Fund (PSF) pays for clergy in parishes across the diocese and support for the parishes. St Thomas receives much more from the PSF than it gives.

HELP

GENEROUS GIVING is not just about money.

The church relies massively on help from its members and supporters.

We need help with:

- Grant applications*
- Filming and taking photos*
- Sewing and repairing*
- Transporting equipment*

Setting up equipment for events
Staffing church stalls at community events Hospitality
Cleaning and tidying
Refreshments
First Aid
Finance / Accounting
DIY and odd jobs
Gardening
Food hygiene
IT and tech
Social media
Design
Occasional office support
Making displays
Helping with church services
Reading in services or leading prayers Singing
Playing an instrument
Health and Safety
Washing and ironing
Work with children and young people

Occasional data analysis

God loves us. We can never repay God for all God has done for us. But we can say thank you.

CAN YOU START HELPING?

CAN YOU INCREASE OR CHANGE HOW YOU ALREADY HELP?

Sometimes people feel God is calling them to a ministry that is named by the wider church and involves some training. Please speak to Revd Liz if you would like to know more about this. revdlizn@gmail.com or search <https://southwark.anglican.org/exploring-your-call/what-is-my-vocation/>

PRAY

If God is for us, who is against us? *Romans 8 v 30*

Jesus taught us to pray and promised that God will always hear us. So please pray daily for our church. That God will show us how to:

- count our blessings
- trust in his abundance
- notice where he's at work

Please pray for God's Mission here.

DISCIPLESHIP

For children and young people to contribute, shape, and have a sense of ownership in church.
For all ages to explore and deepen their faith.
That our worship might enable us to encounter God.
That we reach more people through different 'ways of being church'.
That we welcome people new or returning to church.

WITNESS

That we grow our partnership with organisations dedicated to justice, peace and reconciliation.
That we work towards becoming an Eco Church.
That we provide good pastoral care.
That we grow in confidence to share our faith.
That our buildings and grounds are open more.

CONNECTION

That we grow our partnership with local schools and other local organisations.
That we work to make St Thomas a hub and place of belonging for its parish and people.

RESPOND

Please email revdlizn@gmail.com if you could:

- help in some way
- start giving money or increase the amount you already give
- become a prayer partner, regularly praying for our church

We live in difficult times and our world needs hope.
Help St Thomas Church be a symbol and a bringer of hope through your

GENEROUS GIVING give+help+pray

THANK YOU!